



 3

Bedrooms

 2

Bathrooms

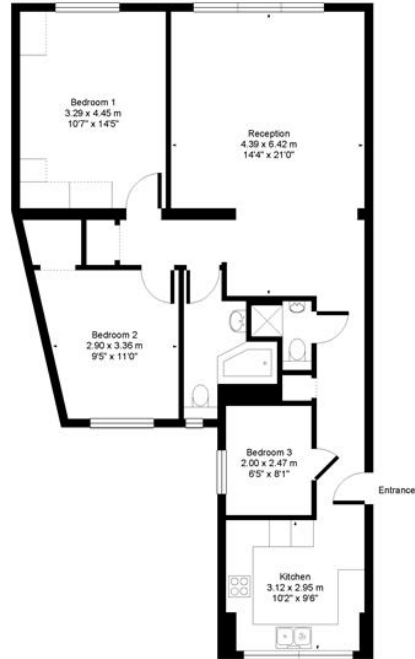


This well-proportioned 3 bedroom, 2 bathroom first-floor apartment is situated in a sought after location, overlooking Hyde Park.

This well-proportioned first-floor apartment is situated in a sought after location, overlooking Hyde Park. Set within a grand, portered building, the property comprises two generous sized bedrooms, a large kitchen, an elegant family-sized bathroom, a second bathroom with a shower and WC, a study that can be used as another bedroom, and a large reception room overlooking Hyde Park. Benefits also include air conditioning, porter service and no onward chain.

Viewings are highly recommended.

Hyde Park Place
W2
Approx. Gross Floor Area = 86 sq.meters • 930 sq.feet



FIRST FLOOR

For illustrative purposes only. Not to scale. Prepared by swan photography 07974 264576

Energy Efficiency Rating		Current	Potential
Very energy efficient - lower running costs			
(92-100)	A		
(81-91)	B		
(69-80)	C	75	77
(55-68)	D		
(39-54)	E		
(21-38)	F		
(1-20)	G		
Not energy efficient - higher running costs			
England, Scotland & Wales		EU Directive 2002/91/EC	

