



 2

Bedrooms

 1

Bathroom

Fully refurbished Victorian two bedroom terrace house located in the beautiful and sought after rural location of Eynsford Village. The property offers easy access to the M25 & A20

The property benefits from a newly fitted kitchen with integrated oven , fitted hob and extractor fan, newly fitted bathroom suite with bath shower mixer. The property is also fully redecorated throughout along with newly fitted flooring. Externally, there is an attractive rear garden , mainly laid to lawn with mature shrub borders.

Rent £1150.00pcm

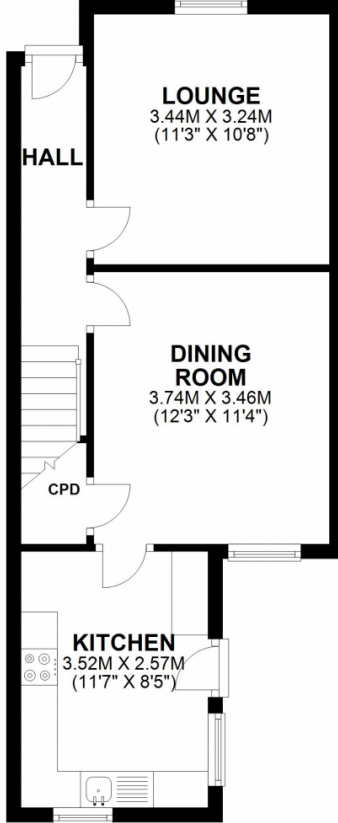
Deposit £1325.00

Council Tax Band D (£1939.82)

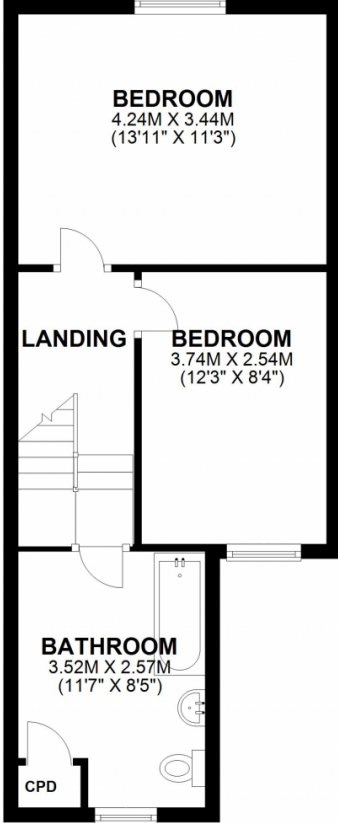
EPC Band D (67)

Available Early February

GROUND FLOOR
APPROX. 39.5 SQ. METRES (424.8 SQ. FEET)



FIRST FLOOR
APPROX. 40.2 SQ. METRES (432.4 SQ. FEET)



TOTAL AREA: APPROX. 79.6 SQ. METRES (857.2 SQ. FEET)

The image shows the Energy Performance Certificate (EPC) logo, which consists of a house icon with a color-coded scale from A (green) to G (red). To the right of the scale is the text 'EPC' in large red letters. Below this, the text 'Coming soon' is written in a large, bold, grey font. A red horizontal bar with a white arrow pointing right is positioned below the text.

