



**Guide price £1,680,000**

**FREEHOLD**

**Brook Mews North, Bayswater, W2**

**Bedrooms : 4**

**Bathrooms : 3**

**Reception Rooms : 1**

**Metropole Properties**  
244 Edgware Road, London, W2 1DS  
sales@metropoleproperty.com | 442072625844  
Website: metropoleproperty.com

**METROPOLE**  
**PROPERTIES**

## **Brook Mews North, W2**

Metropole Properties are pleased to bring into the market this substantial four bedroom Mews House arranged over three floors in Brook Mews North, a sought after cobbled mews near Hyde Park.

Arranged over 1280 sqft- 120 sqm approx, this bright and spacious Mews House has been recently renovated and is offered in excellent condition throughout comprising of:

On the ground floor, two bedrooms, a kitchenette, a shower room/guest cloakroom and a hallway.

On the first floor, an open plan contemporary fully fitted kitchen and a vast and bright reception room with dining area.

On the second floor, two bedrooms with en-suite bathrooms and built-in wardrobes.

Brook Mews North is ideally located within five minutes walk to both Lancaster Gate (Central Line) and Paddington Stations (Hammersmith & City, Bakerloo, Circle & District Lines, Heathrow Express, Network rail).

Situated moments away from The Hyde Park and the picturesque surroundings of the Italian Gardens and Kensington Gardens, this impressive freehold mews house would make an ideal family home, a buy-to-let or an investment property.

Early Viewing is recommended!

**Guide Price: £1,680,000 stc**

### **1. AML regulations:**

Intending purchasers will be asked to produce identification documentation at a later stage.

### **2. General:**

While we endeavour to make our sales particulars accurate, fair, and reliable, these are only a description and general guide to the property. Kindly contact our office should you require further details or clarification before requesting a viewing and we will be pleased to check the position for you.

### **3. Particulars:**

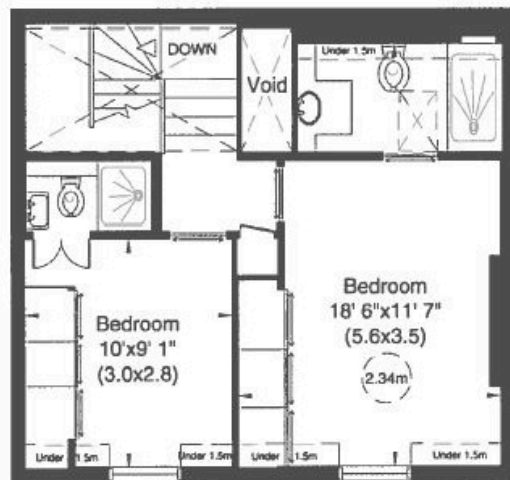
These particulars are issued in good faith. However, Particulars do not constitute representations of fact and do not form part of any offer or sale contract. The matters referred to in the particulars should be independently verified by prospective buyers.

### **4. Measurements:**

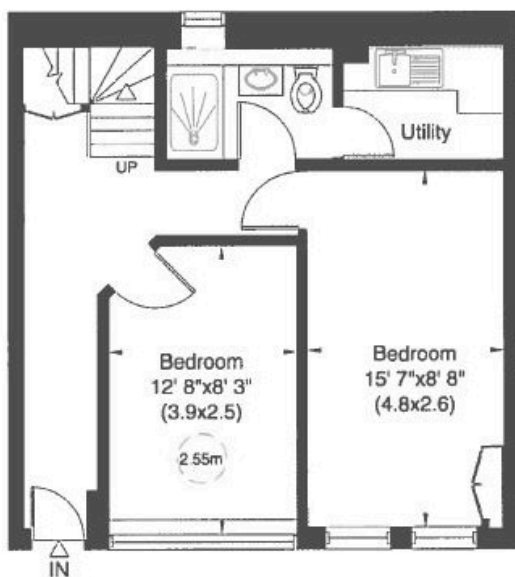
The measurements indicated in the description and on the floor plans are supplied for guidance only and as such must be considered incorrect.

### **5. Services:**

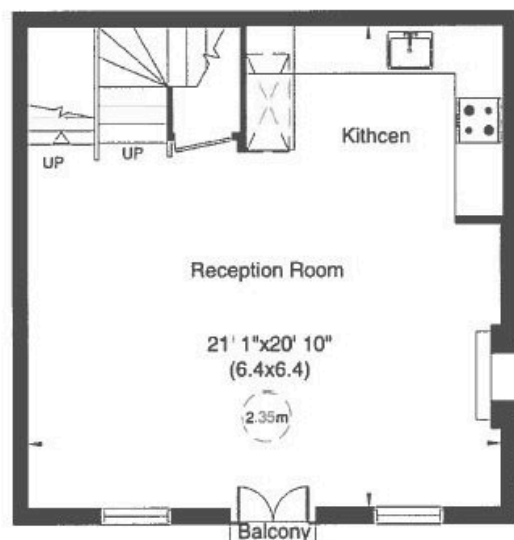
Please note that we have not tested the services or any of the appliances in this property. Therefore, we strongly advise prospective buyers to conduct their own surveys or service reports before finalizing their purchase.



Second Floor



Ground Floor

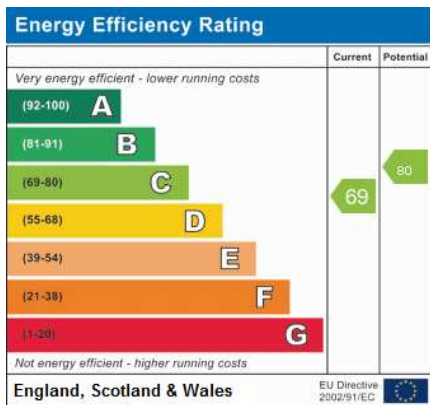


First Floor



**Metropole Properties**  
244 Edgware Road, London, W2 1DS  
sales@metropoleproperty.com | 442072625844  
Website: metropoleproperty.com

**METROPOLE**  
**PROPERTIES**



**Metropole Properties**  
 244 Edgware Road, London, W2 1DS  
 sales@metropoleproperty.com | 442072625844  
 Website: metropoleproperty.com

**METROPOLE**  
**PROPERTIES**