



 2

Bedrooms

 1

Bathroom





## Full description

TWO BEDROOM END TERRACED SITUATED IN FANTASTIC LOCATION FOR THE TRAFFORD CENTRE/STRETFORD MALL/METROLINK/MEDIA CITY AND M60. Trading Places are pleased to have available this two bedroom end terraced property situated in a much sought after location of Stretford and benefits from having double glazing and gas central heating. The accommodation comprises entrance hall, lounge with archway through to a dining room and an extended fitted kitchen, whilst to the first floor there are two bedrooms and a white bathroom.

Courtyard to rear.

## Room Dimensions

### Hall

UPVC double glazed door opening to hallway with high ceilings. Saircase leading to the first floor. Laminate floor.

### Lounge *11'8 x 10'11*

Double glazed window to front elevation. Radiator. Open arch to dining room. Laminate floor.

### Dining Room *13' x 11'1*

Double glazed window to rear elevation. Radiator.

### Extended Kitchen *13'10 x 5'4*

Fitted with a range of wall and base units incorporating a one and half single drainer sink unit with mixer tap. Integrated gas hob with oven below and extractor above. Plumbed for washing machine. Space for small fridge. Wall mounted boiler. Laminate floor. Door leading to Courtyard.

### Landing

Access to loft and first floor rooms.

### Master Bedroom *16'11 x 11'4*

Two double glazed windows to front elevation. Laminate floor.

### Bedroom Two *10'11 x 8'5*

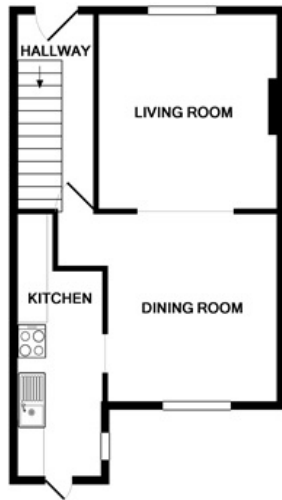
Double glazed window to rear elevation. Radiator. Laminate floor.

### Bathroom

White bathroom suite comprising:- panel bath, pedestal wash hand basin and WC. Part tiled walls. Lino floor.

## **Courtyard**

Paved Courtyard to rear with gated access.



GROUND FLOOR  
APPROX. FLOOR  
AREA 34.9 SQ.M.  
(376 SQ.FT.)



1ST FLOOR  
APPROX. FLOOR  
AREA 32.8 SQ.M.  
(353 SQ.FT.)

TOTAL APPROX. FLOOR AREA 67.6 SQ.M. (728 SQ.FT.)

