



 **2**
Bedrooms

 **1**
Bathroom

**Tenure :
Freehold**



A beautifully presented two bedroom semi detached home located on Park Road in Oulton.

Call Tudor Sales & Lettings today for more information or to arrange a viewing.

To be sold with no onward chain is this truly stunning two bedroom semi detached home located on Park Road in this much sought after area of Oulton. Immaculate throughout and ready to move into with no works required, this fantastic home comprises in brief: entrance hallway, wc/cloaks, kitchen and a lounge. First floor: two double bedrooms and a modern bathroom. Benefits from double glazing and gas central heating. Externally there is a double driveway to the front offering off road parking. To the rear is a private and fully enclosed lawned garden and patio area. Call Tudor Sales & Lettings today for more information or to arrange a viewing on 0113 282 3056.

Kitchen 9' 9" x 6' 8" (2.97m x 2.03m)

Fitted with a range of wall and base units. Laminated worksurfaces and upstands. Integrated oven, gas hob, splashback and extractor over. Integrated dishwasher and washing machine. Space for free standing fridge freezer. Laminated flooring. Double glazed window.

Lounge 14' 3" x 13' 7" (4.34m x 4.14m)

A spacious lounge with double glazed French doors that open to the delightful rear garden. Central heating radiator. Laminated flooring. Television point.

WC / Cloaks

Push button wc. Wash hand basin. Central heating radiator. Double glazed window.

Bedroom 1 13' 7" x 9' 03" (4.14m x 2.82m)

Double bedroom with two double glazed windows. Central heating radiator.

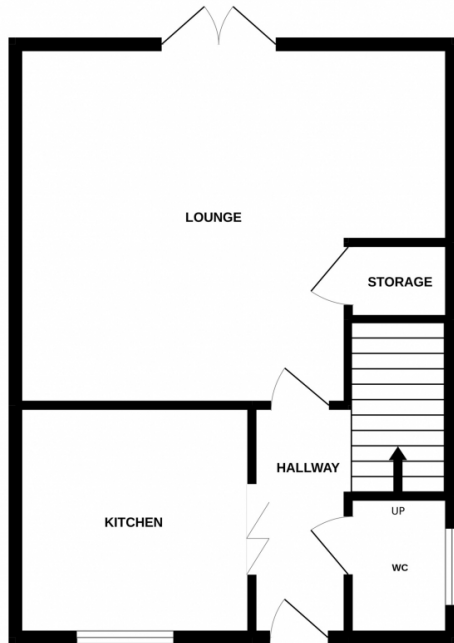
Bedroom 2 10' 6" x 8' 6" (3.20m x 2.59m)

Double bedroom with two double glazed windows. Fitted wardrobe and cupboard. Central heating radiator.

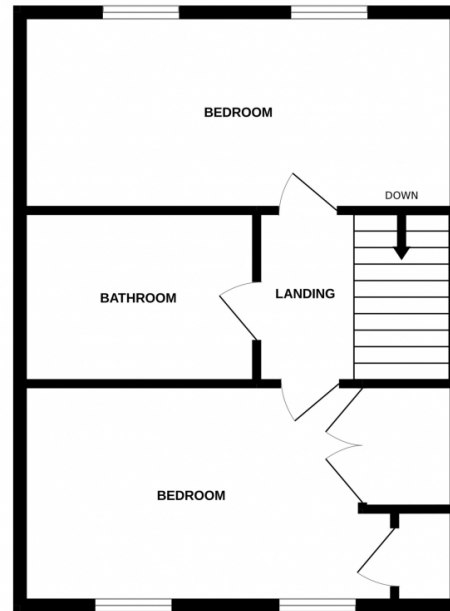
Bathroom 6' 6" x 5' 6" (1.98m x 1.68m)

A modern bathroom with three piece suite comprising of: bath with shower over and a shower screen. Push button wc. Wash hand basin. Central heating radiator. Part tiled walls.

GROUND FLOOR



1ST FLOOR



Whilst every attempt has been made to ensure the accuracy of the floorplan contained here, measurements of doors, windows, rooms and any other items are approximate and no responsibility is taken for any error, omission or mis-statement. This plan is for illustrative purposes only and should be used as such by any prospective purchaser. The services, systems and appliances shown have not been tested and no guarantee as to their operability or efficiency can be given.
Made with Metropix ©2022

