



 **2**
Bedrooms

 **1**
Bathroom



***** THIS PROPERTY IS NOW UNDER OFFER *****

Warren Bradley Estates are delighted to offer for sale this extremely well presented Two Bedroom Mews House ideally located in Monterey Close, a private Mews of 5 houses which surround a quiet courtyard within yards of Mill Hill Broadway and the fantastic amenities it has to offer including the Mill Hill Broadway Thameslink Station which provides swift and direct access to Central London.

The property benefits from a large lounge which leads to a fully fitted open plan kitchen and a guest WC. There are two bedrooms on the first floor and a modern bathroom. Offered for sale CHAIN FREE an early viewing is highly recommended.

Reception/Open Plan Kitchen *5.11m x 4.78m (16.76ft x 15.68ft)*

Sep WC *1.92m x 0.81m (6.30ft x 2.66ft)*

Bedroom 1 *3.88m x 3.24m (12.73ft x 10.63ft)*

Bedroom 2 *2.58m x 1.82m (8.46ft x 5.97ft)*

Bathroom *2.30m x 1.80m (7.55ft x 5.91ft)*

Freehold

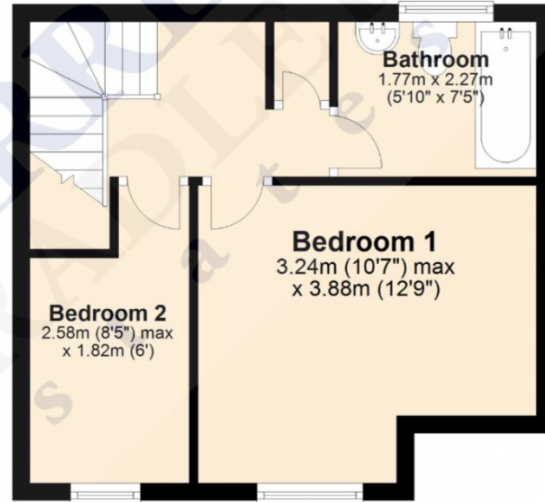
Ground Floor

Approx. 28.4 sq. metres (306.0 sq. feet)



First Floor

Approx. 29.0 sq. metres (312.2 sq. feet)



Total area: approx. 57.4 sq. metres (618.2 sq. feet)

Disclaimer: Please note this floor plan is for marketing purposes and is to be used as a guide only.
 Plan produced using PlanUp.

Score	Energy rating	Current	Potential
92+	A		
81-91	B		88 B
69-80	C		
55-68	D	68 D	
39-54	E		
21-38	F		
1-20	G		

The graph shows this property's current and potential energy efficiency.

